

Risefit



Environmental  
Data Sheet

## Safe and environmentally friendly products

Okamura's environmental priorities in product design and assessment ensure the delivery of safe, eco-conscious products that give consumers peace of mind.

## A harmony of design, ecology, and economy

Okamura reduces raw material inputs during manufacture by analyzing finite elements with CAE and adopting other leading-edge methods. We harmonize design, ecology, and economy.

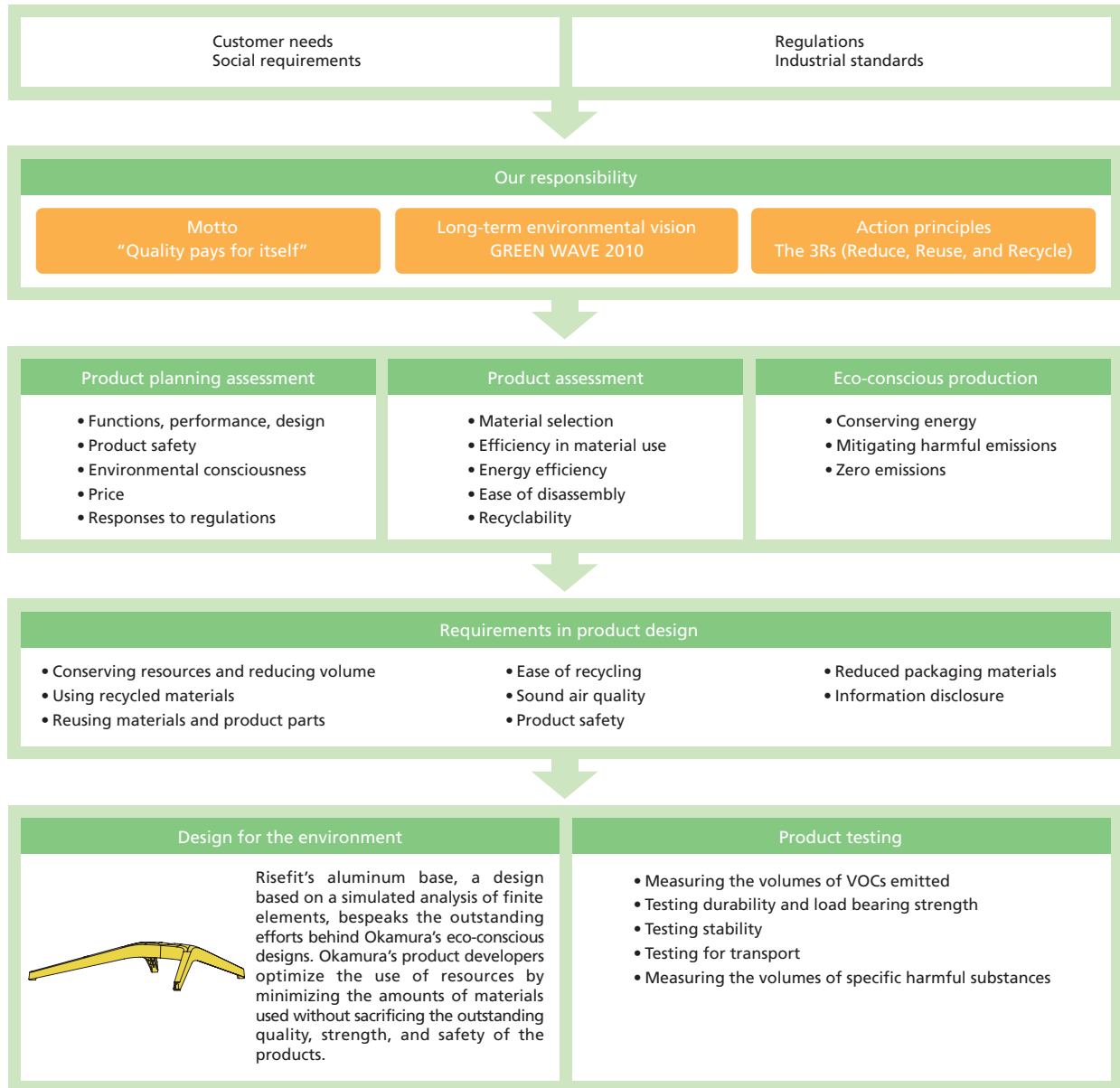
## Keeping clean air

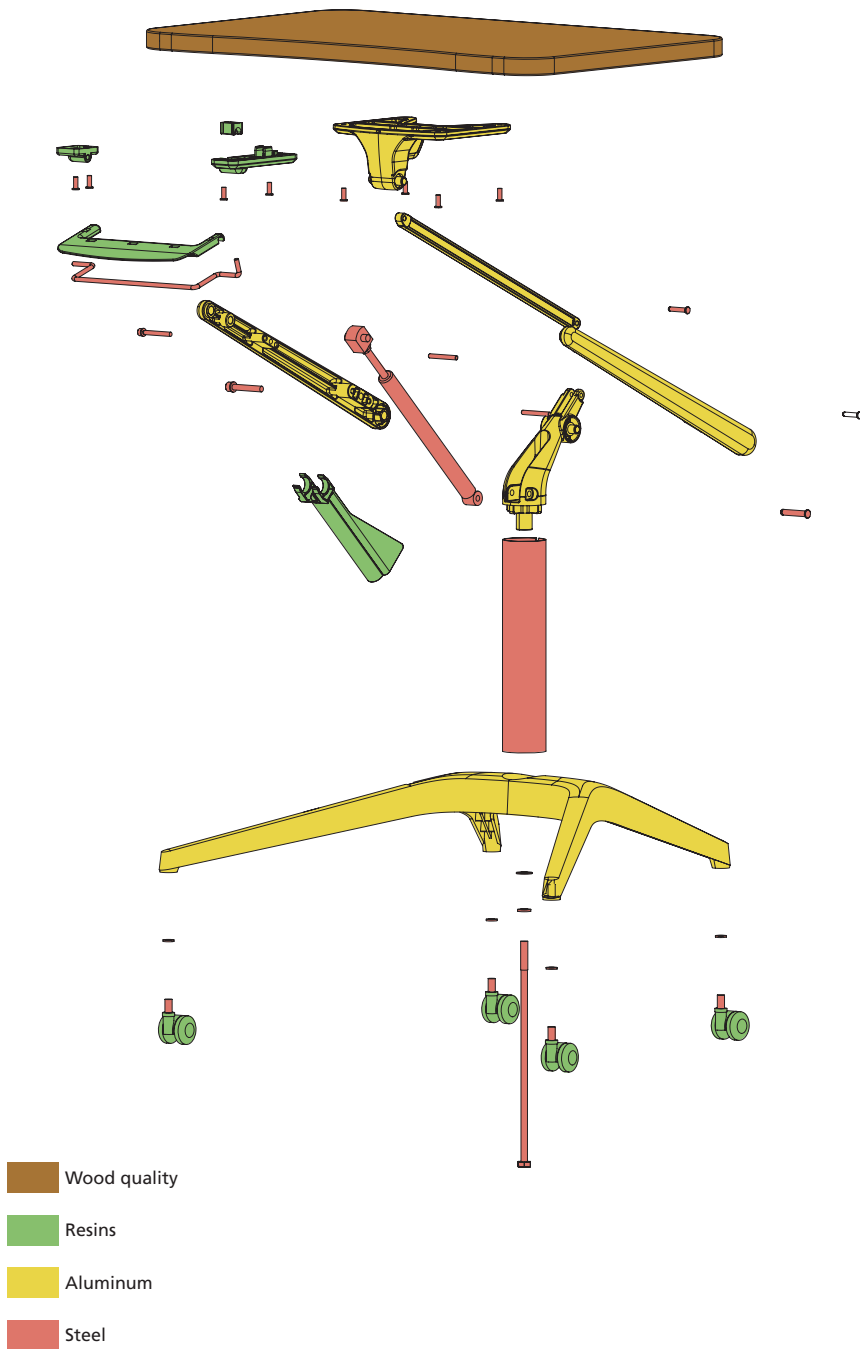
The furniture is a critical part of any office space. This is another factor that motivates Okamura to protect the air quality of offices by positively using raw materials and paints free of volatile organic compounds (VOCs).

## Designs for easier reuse and recycling after use

Okamura designs products that can be easily broken down into homogeneous materials to facilitate the reuse of parts recovered from post-use products and material recycling. The materials used in major components are clearly identified.

### Developing eco-conscious products





### Total control of every material used

Okamura collects thorough information on the materials, surface finishing methods, and other aspects of the parts used in its products, from the main components of its office equipment to individual screws. Detailed data on materials are provided upon request.

Recycled materials: **83%**

Recycled materials are used in aluminum and wood quality parts. These materials make up about 83% by product weight.

Recyclability: **47%**

With future recyclability firmly in mind during the design stage, we use homogeneous materials as much as possible. After use, our products can be collected and disassembled into homogeneous materials.

#### Wood

In deference to the ecology of the earth's forests, Okamura does not use wood from illegally felled trees. We efficiently make use of wood only from properly managed forests. We have stipulated a wood-use policy that promotes the preservation and sustainment of the diversity of life on our planet, and are actively involved in expanding the use of sustainably harvested wood and wood from certified forests.



#### Aluminum

Recovered aluminum is processed into a recycled form by alloy manufacturers and later into aluminum. Energy consumption can be reduced by 97% by generating recycled metal from recovered aluminum rather than creating aluminum from its source material bauxite.



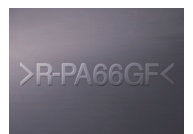
#### Steel

Steelmakers use recovered steel to produce new steel. Steelmaking with recovered steel consumes 75% less energy than steelmaking from iron ore.



#### Indicating materials

Okamura indicates the materials used to facilitate recycling after use.



## Reducing VOCs to safeguard health

Okamura minimizes the use of formaldehyde, toluene, xylene, and other VOCs, which can result in sick building syndrome and allergic dermatitis. To cite just one example, the snugly fitting backrest and seat meshes of Risefit were accomplished using an original design requiring a minimal amount of adhesive. Environmental load can be reduced while achieving outstanding comfort and strength.

### Reductions in VOCs

Toluene  
Xylene  
Formaldehyde  
Aldehydes  
4-phenylcyclohexene

## Minimizing environmental load

Amid calls to limit the use of the earth's resources, the reuse and recycling of post-use products are now global agendas. To ensure safe and sure progress in recycling, manufacturers must limit the use of substances with environmental loads. The latest round of enhancements in the regulatory framework started with the European Parliament's Restriction of Hazardous Substances (RoHS) directive. Though office furniture is not currently included among the targets of this regime, Okamura is working to reduce substances with environmental impacts in response to customer demand and in anticipation of future legislation.

### Reducing substances with environmental load

Lead  
Mercury  
Cadmium  
Chromium VI  
PBB (Polybrominated biphenyl)  
PBDE (Polybrominated diphenyl ether)

Cleared  
standard values\*1  
based on the  
RoHS directive\*2

\*1 These standard values contain exemptions set in the RoHS directive.

\*2 Directive put into effect in European Union member states in July 2006 to restrict the use of hazardous substances in electronic and electrical equipment.



# LEED Credit Summary

| Program  | Category                     | Item   |   | Contribution  | Point of contribution |
|--|------------------------------|--------|---|---|-----------------------|
| LEED 2009 for Commercial Interiors                           | Materials & Resources        | MR 3.2 | Resource Reuse                              | This product (Risefit) is designed to be refurbished and easy replacement. And it can be used any longer by having proper maintenance. Product can contribute to the this point by reusing. In Japan, Okamura has a service network by its subsidiary, Okamura Support and Service. | 1                     |
|  |                              | MR 4   | Recycled content                            | 83.2% (1/2Pre-Consumer: 0%, Post-Consumer: 83.2%)   | 1-2                   |
|  |                              | MR 5   | Regional materials                          | Assembled in Takahata town, Yamagata, Japan.<br>Please contact us in case of the delivery outside of Japan.   | 1-2                   |
|  | Indoor Environmental Quality | ID 1   | Innovation in design                        | High percentage of recycled content.  | 1-5                   |
| LEED 2009 for New Construction and Major Renovations         | Materials & Resources        | MR 3   | Material Reuse                              | This product (Risefit) is designed to be refurbished and easy replacement. And it can be used any longer by having proper maintenance. Product can contribute to the this point by reusing. In Japan, Okamura has a service network by its subsidiary, Okamura Support and Service. | 1-2                   |
|  |                              | MR 4   | Recycled content                            | 83.2% (1/2Pre-Consumer: 0%, Post-Consumer: 83.2%)   | 1-2                   |
| LEED 2009 for Existing Buildings, Operations and Maintenance | Materials & Resources        | MR 1   | Sustainable Purchasing -Ongoing Consumables | 83.2% (1/2Pre-Consumer: 0%, Post-Consumer: 83.2%)   | 1                     |
|  |                              | MR 2   | Sustainable Purchasing -Durable Goods       |   | 1-2                   |

# Global Sales Network



As of June, 2011



For inquiries and consultation requests:

Visit the Okamura website for the latest updates on Okamura products.  
<http://www.okamura.jp/>